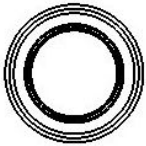
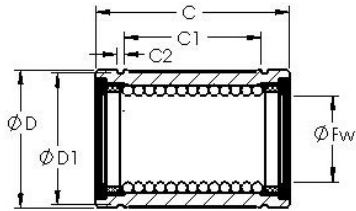




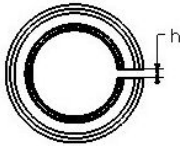
KFY MANUFACTURING MEXICO LIMITED

AST LBE 40 UU AJ linear bearings

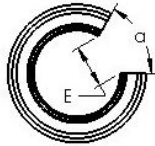
Bearing No. LBE 40 UU AJ



STANDARD



ADJUSTABLE



OPEN

LBE 40 UU AJ Bearing 2D drawings and 3D CAD models

| | |
|------------------------------|-----------------------------------|
| Bore Diameter | 40 mm |
| Bearing Type | sealed, adjustable clearance type |
| Dynamic Load Rating (Cr) | 2,710 |
| Static Load Rating (Cor) | 4,890 |
| Shaft Dia. (Fw) | 40.000 |
| Outside Dia. (D) | 62.000 |
| Length (C) | 80.000 |
| Groove-to-groove length (C1) | 56.000 |
| Groove Width (C2) | 2.100 |
| Groove Dia. (D1) | 59.000 |
| Adjustable Open Gap (h) | 2.000 |
| Weight (g) | 550.00 |
| Material | 52100 chrome steel, or equivalent |