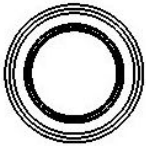
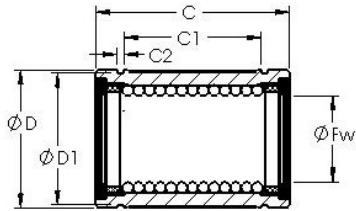




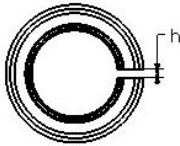
KFY MANUFACTURING MEXICO LIMITED

AST LBB 10 UU OP linear bearings

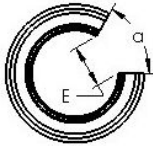
Bearing No. LBB 10 UU OP



STANDARD



ADJUSTABLE



OPEN

LBB 10 UU OP Bearing 2D drawings and 3D CAD models

Bore Diameter	15,875 mm
Bearing Type	sealed, open type
Dynamic Load Rating (Cr)	95
Static Load Rating (Cor)	243
Shaft Dia. (Fw)	0.625
Outside Dia. (D)	1.125
Length (C)	1.500
Groove-to-groove length (C1)	1.104
Groove Width (C2)	0.056
Groove Dia. (D1)	1.075
Open Gap (E)	0.375
Open Gap (a deg.)	60.00
Weight (g)	54.00
Material	52100 chrome steel, or equivalent