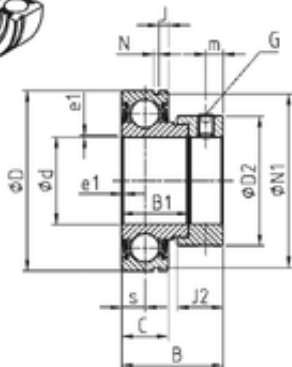




KFY MANUFACTURING MEXICO LIMITED



41,275 mm x 85 mm x 43,7 mm SNR
CES209-26 deep groove ball bearings

Bearing No. CES209-26

CES209-26 Bearing 2D drawings and 3D CAD models

Size	41.275x85x43.7 mm
Bore Diameter	41,275 mm
Outer Diameter	85 mm
Width	43,7 mm
d	41,275 mm
D	85 mm
B	43,7 mm
B1	30,2 mm
C	19 mm
e	1,5 mm
a	3,96875 mm
m	6,5 mm
s	9,5 mm
D2	63,5 mm
J	3,18 mm
N	1,9 mm
N1	81,81 mm
Thread (G) - 5/16-24UNF	5/1624UNF
J2	18,3 mm
Weight	0,82 Kg
Basic dynamic load rating (C)	31,85 kN
b	1.9 mm
B2	18.3 mm
d1	63.5 mm
G	5/16-24UNF



KFY MANUFACTURING MEXICO LIMITED

r	1.5
S	9.5 mm
SW	3.97 mm
C0	20.8 kN
T min.	-20 ° C
T max.	100 ° C
Recommended tightening torque for set screw	8 Nm