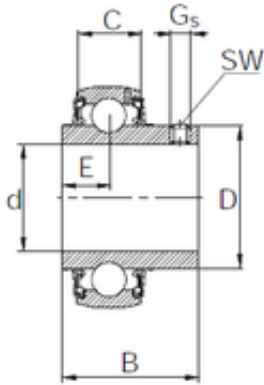




KFY MANUFACTURING MEXICO LIMITED

55 mm x 100 mm x 55.6 mm KBC UC211 deep groove ball bearings



Bearing No. UC211

Size	55x100x55.6 mm
Bore Diameter	55 mm
Outer Diameter	100 mm
Width	55.6 mm
d	55 mm
D	100 mm
B	55.6 mm
C	24 mm
SW	5 mm
E	22.2 mm
Thread (G)	M10x1.25
Weight	1.03 Kg
Basic dynamic load rating (C)	43,5 kN

UC211 Bearing 2D drawings and 3D CAD models